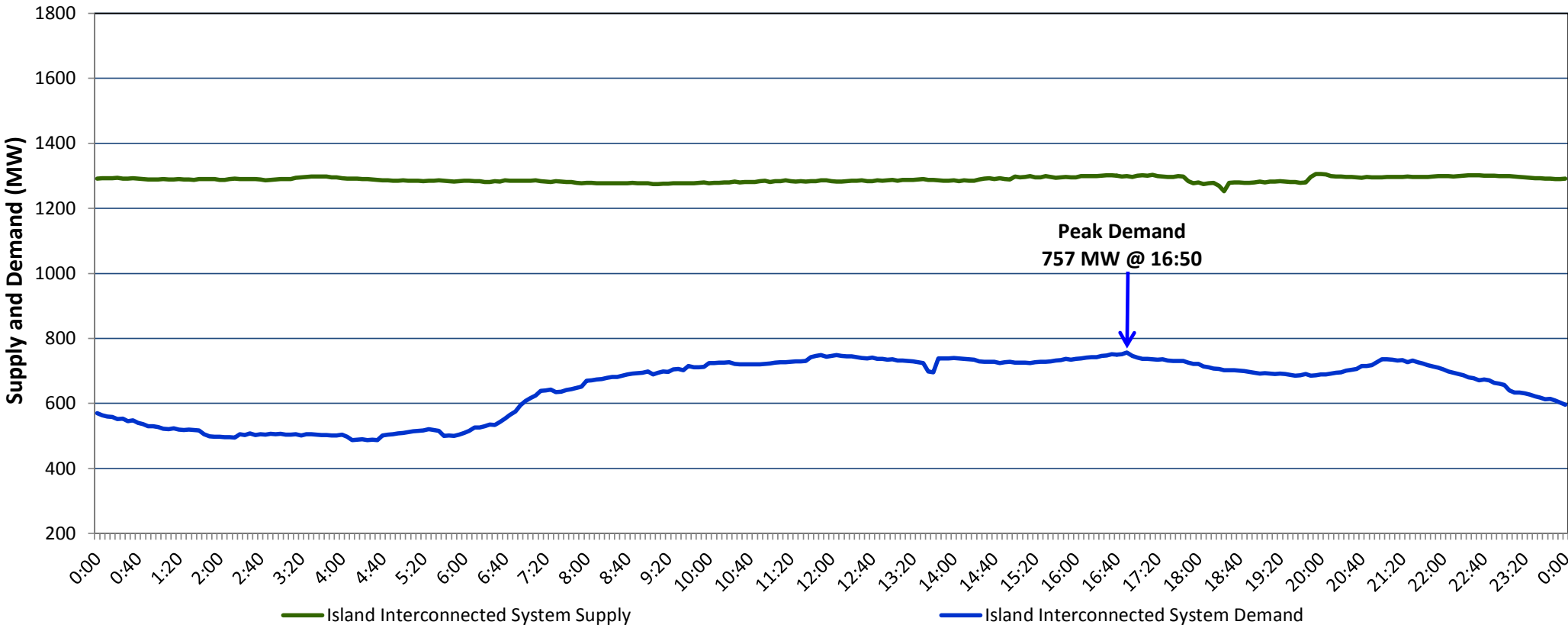


Newfoundland Labrador Hydro (NLH)  
Supply and Demand Status Report Filed Wednesday, August 09, 2017

Section 1  
Island Interconnected System Supply and Demand  
Actual 24 Hour System Performance For Tuesday, August 08, 2017



Supply Notes For August 08, 2017

- A As of 1858 hours, June 22, 2017, Stephenville Gas Turbine available at 25 MW (50 MW).
- B As of 0938 hours, June 23, 2017, Holyrood Unit 1 unavailable due to planned outage 120 MW (170 MW).
- C As of 1018 hours, July 07, 2017, Granite Canal Unit unavailable due to planned outage (40 MW).
- D As of 1314 hours, July 11, 2017, St. Anthony Diesel Plant available at 8.85 MW (9.7 MW).
- E As of 1058 hours, July 23, 2017, Bay d'Espoir Unit 1 unavailable due to planned outage (76. 5 MW).
- F As of 0827 hours, July 31, 2017, Holyrood Unit 2 unavailable due to planned outage 165 MW (170 MW).
- G As of 0827 hours, July 31, 2017, Holyrood Unit 3 unavailable due to planned outage (150 MW).
- H As of 1250 hours, August 06, 2017, Upper Salmon Unit unavailable due to planned outage (84 MW).
- I At 1500 hours, August 08, 2017, Paradise River Unit available (8 MW).

Section 2  
Island Interconnected Supply and Demand

Wed, Aug 09, 2017	Island System Outlook <sup>3</sup>	Seven-Day Forecast	Temperature (°C)		Island System Daily Peak Demand (MW)
			Morning	Evening	
Available Island System Supply: <sup>5</sup>	1,275 MW	Wednesday, August 09, 2017	13	15	775
NLH Generation: <sup>4</sup>	975 MW	Thursday, August 10, 2017	16	19	765
NLH Power Purchases: <sup>6</sup>	115 MW	Friday, August 11, 2017	17	19	795
Other Island Generation:	185 MW	Saturday, August 12, 2017	17	17	770
Current St. John's Temperature:	13 °C	Sunday, August 13, 2017	15	15	795
Current St. John's Windchill:	N/A °C	Monday, August 14, 2017	17	18	790
7-Day Island Peak Demand Forecast:	805 MW	Tuesday, August 15, 2017	11	14	805

Supply Notes For August 09, 2017

- Notes:
- Generation outages for running and corrective maintenance are included. These are not unusual for power system operations. They generally do not impact customer supply. The power system operators schedule outages to system equipment whenever possible to coincide with periods when customer demands are low and sufficient supply reserves are available. However, from time to time equipment outages are necessary and reserves may be impacted.
  - Due to the Island Interconnected System being isolated from the larger North American grid, when there is a sudden loss of large generating units some customer's load must be interrupted for short periods to bring generation output equal to customer demand. This automatic action of power system protection, referred to as under frequency load shedding, is necessary to ensure the integrity and reliability of system equipment. Under frequency events typically occur 5 to 8 times per year on the Island Interconnected System and the resultant customer load interruptions are generally less than 30 minutes.
  - As of 0800 Hours.
  - Gross output including station service at Holyrood (24.5 MW) and improved NLH hydraulic output due to water levels (35 MW).
  - Gross output from all Island sources (including Note 4).
  - NLH Power Purchases include: CBPP Co-Gen, Nalcor Exploits, Rattle Brook, Star Lake, Vale capacity assistance (when applicable), and Wind Generation.

Section 3  
Island Peak Demand Information  
Previous Day Actual Peak and Current Day Forecast Peak

Tue, Aug 08, 2017	Actual Island Peak Demand <sup>8</sup>	16:50	757 MW
Wed, Aug 09, 2017	Forecast Island Peak Demand		775 MW

Notes: 8. Island Demand is supplied by NLH generation and purchases, plus generation owned and operated by Newfoundland Power and Corner Brook Pulp & Paper (Deer Lake Power, DLP).